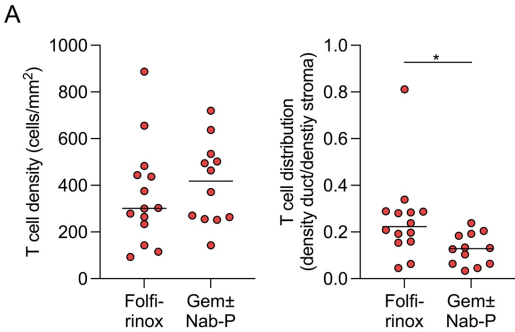


SUPPLEMENTARY FIGURES

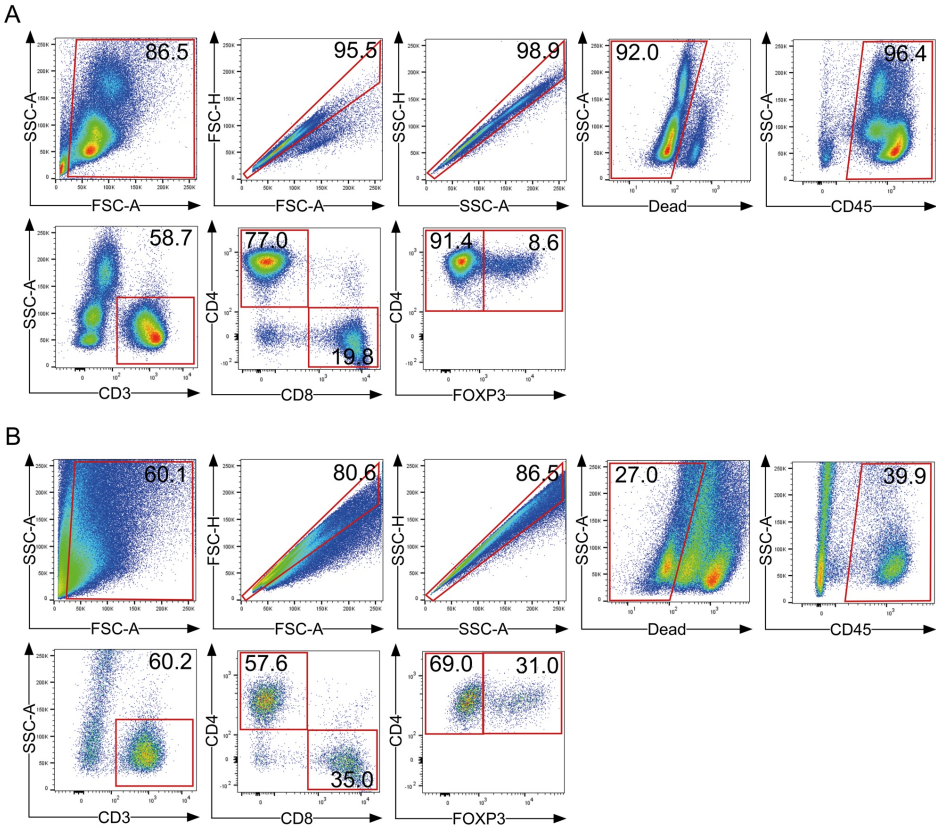
SUPPLEMENTARY FIGURE S1



Supplementary Figure. S1

(A) Quantification of T cell density in whole PDAC and distribution (density duct/density stroma) of NEO patients treated with FOLF (FOLFIRINOX or FOLFOXIRI; n = 14) and Gemcitabine (Gem) with or without Nab-Paclitaxel (Nab-Pac; n = 12). Each point represents data from one patient. Data, median. Unpaired two-tailed *t* tests. *, $p < 0.05$.

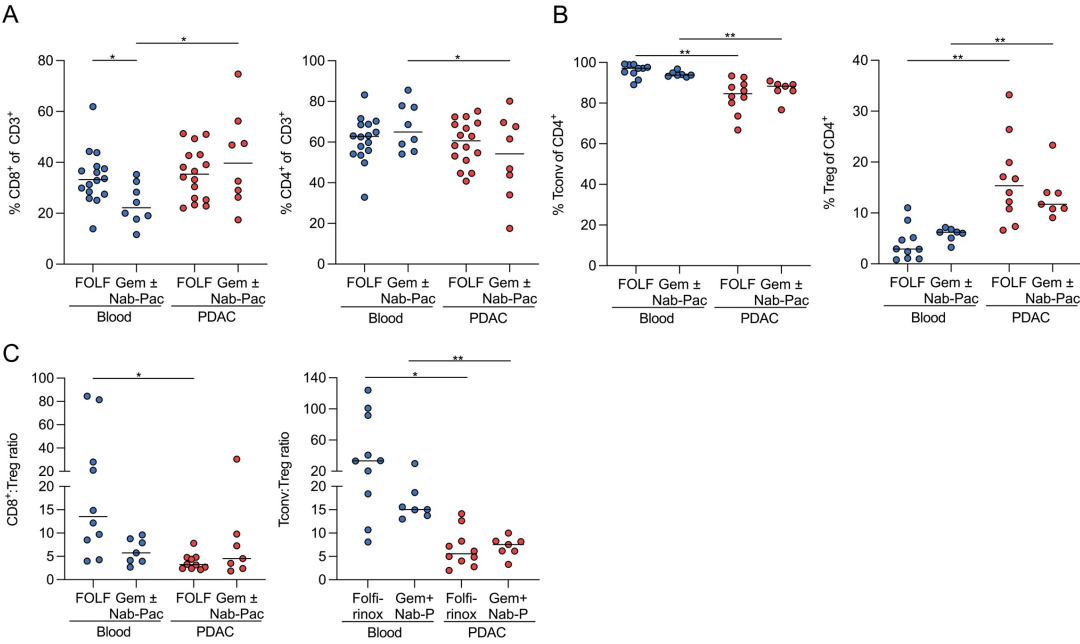
SUPPLEMENTARY FIGURE S2



Supplementary Figure. S2

(A) Representative flow cytometric gating strategy for the identification of T cells in blood and (B) tumor samples from patients with PDAC. Numbers indicate percentage of population per gate. SSC, side scatter; FSC, forward scatter.

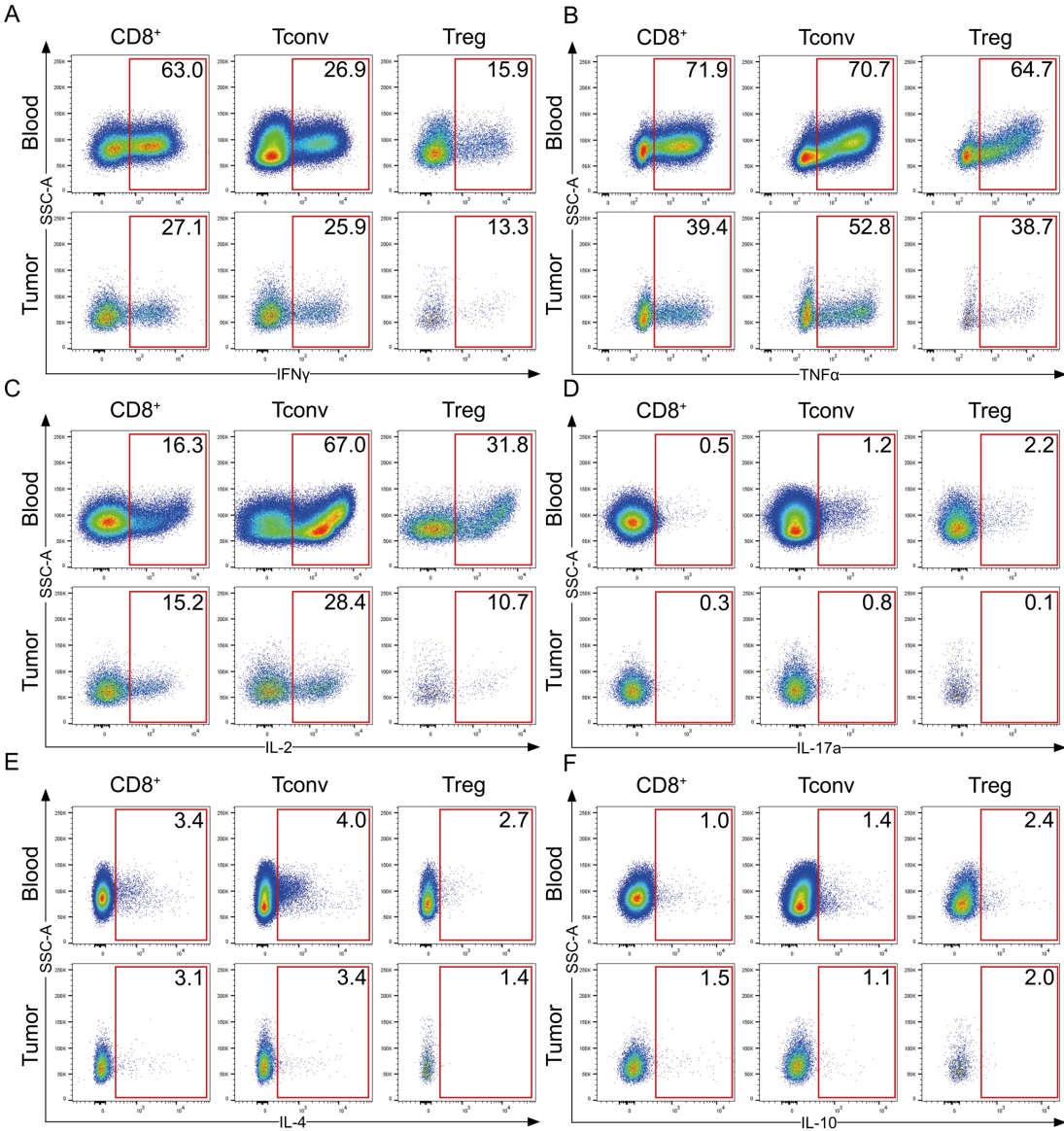
SUPPLEMENTARY FIGURE S3



Supplementary Figure. S3

(A) Quantification of CD8⁺ (left) and CD4⁺ (right) among all CD3⁺ T cells and (B) conventional CD4⁺ T (Tconv; CD4⁺FOXP3⁻; left) and regulatory T (Treg) cells (CD4⁺FOXP3⁺; right) among all CD4⁺ T cells. (C) Ratio of CD8⁺ T to Treg cells (left) and CD4⁺ Tconv to Treg cells (right). Each point represents data from one NEO patient. FOLF, FOLFIRINOX or FOLFOXIRI, folinic acid, 5-fluorouracil, oxaliplatin, and irinotecan; Gem, gemcitabine; Nab-Pac, nab-paclitaxel. Data, median. Unpaired two-tailed *t* test and paired two-tailed *t* test, respectively. *, $p < 0.05$; **, $p < 0.01$.

SUPPLEMENTARY FIGURE S4



Supplementary Figure. S4

(A-F) Representative flow cytometric gating for indicated cytokine production by indicated T cell subset in blood and tumor samples from patients with PDAC. Numbers indicate percentage of population per gate.

SUPPLEMENTARY TABLES

Table S1. Clinicopathologic characteristics of patients in multiplex immunofluorescence cohort.

Variable	PR (n = 62) n (%)	NEO (n = 29) n (%)	p value
Age			
Median (Range)	70 (47-80)	67 (36-78)	0.3214
Gender			
Male	31 (50)	14 (48)	0.9999
Female	31 (50)	15 (52)	
pT			
1	5 (8)	3 (10)	0.4093
2	38 (61)	14 (48)	
3	18 (29)	10 (35)	
4	1 (2)	2 (7)	
pN			
0	24 (39)	8 (28)	0.2401
1	22 (35)	16 (55)	
2	16 (26)	5 (17)	
pM			
0	61 (98)	22 (76)	0.0012
1	1 (2)	7 (24)	
UICC Stage			
I	3 (5)	3 (10)	0.0089
II	43 (69)	13 (45)	
III	15 (24)	6 (21)	
IV	1 (2)	7 (24)	

Table S2. Clinicopathologic characteristics of neoadjuvantly treated patients in multiplex immunofluorescence cohort. FOLF, FOLFIRINOX or FOLFOXIRI, folinic acid, 5-fluorouracil, oxaliplatin, and irinotecan; Gem, gemcitabine; Nab-Pac, nab-paclitaxel; OX, oxaliplatin.

Variable	Gem (n = 3)	Gem + Nab-Pac (n = 8)	Gem + OX (n = 1)	FOLFIRINOX or FOLFOXIRI (n = 14)	FOLF + Gem + Nab-Pac (n = 3)
Age					
Median (Range)	64 (36-74)	73 (59-78)	75	64 (60-76)	68 (68)
Gender					
Male	1	4	0	8	1
Female	2	4	1	6	2
UICC Stage					
I	0	1	0	2	0
II	3	4	1	5	0
III	0	0	0	4	2
IV	0	3	0	3	1
Tumor regression grade					
1	3	5	0	10	1
2	0	3	0	3	1
3	0	0	1	1	1

Table S3. Clinicopathologic characteristics of patients in flow cytometry cohort.

Variable	PR (n = 44) n (%)	NEO (n = 27) n (%)	p value
Age			
Median (Range)	69 (45-84)	65 (50-81)	0.1089
Sex			
Male	22 (50)	13 (48)	0.9999
Female	22 (50)	14 (52)	
pT			
1	4 (9)	2 (8)	0.5120
2	21 (48)	13 (48)	
3	18 (41)	9 (33)	
4	1 (2)	3 (11)	
pN			
0	12 (27)	9 (33)	0.3714
1	17 (39)	13 (48)	
2	15 (34)	5 (19)	
pM			
0	40 (91)	20 (74)	0.2563
1	4 (9)	7 (26)	
UICC Stage			
I	5 (12)	4 (15)	0.0896
II	23 (52)	11 (41)	
III	12 (27)	5 (18)	
IV	4 (9)	7 (26)	

Table S4. Clinicopathologic characteristics of neoadjuvantly treated patients in flow cytometry cohort. FOLFIRINOX or FOLFOXIRI, folinic acid, 5-fluorouracil, oxaliplatin, and irinotecan; Gem, gemcitabine; Nab-Pac, nab-paclitaxel.

Variable	FOLFIRINOX or FOLFOXIRI (n = 16)	Gem + Nab-P (n = 8)	Both (n = 3)
Age			
Median (Range)	65 (50-76)	73 (59-81)	68 (67-68)
Gender			
Male	8	3	2
Female	8	5	1
UICC Stage			
I	2	2	0
II	6	3	1
III	5	0	0
IV	3	3	2
Tumor regression grade			
1	11	4	2
2	3	3	1
3	2	1	0

Table S5. Clinicopathologic characteristics of patients used for t-SNE analysis. FOLFIRINOX or FOLFOXIRI, folinic acid, 5-fluorouracil, oxaliplatin, and irinotecan; Gem, gemcitabine; Nab-Pac, nab-paclitaxel.

Variable	PR (n = 8) n (%)	NEO (n = 8) n (%)	p value
Age			
Median (Range)	73 (45-80)	67 (56-81)	0.7209
Gender			
Male	4 (50)	3 (37.5)	0.9999
Female	4 (50)	5 (62.5)	
pT			
1	0 (0)	0 (0)	0.3256
2	6 (75)	3 (37.5)	
3	2 (25)	5 (62.5)	
4	0 (0)	0 (0)	
pN			
0	1 (12.5)	4 (50)	0.3147
1	4 (50)	3 (37.5)	
2	3 (37.5)	1 (12.5)	
pM			
0	7 (87.5)	7 (87.5)	1
1	1 (12.5)	1 (12.5)	
UICC Stage			
I	0 (0)	2 (25)	0.5214
II	4 (50)	4 (50)	
III	3 (37.5)	1 (12.5)	
IV	1 (12.5)	1 (12.5)	
Tumor regression grade			
1		3	
2		3	
3		2	
Neoadjuvant treatment			
FOLFIRINOX or FOLFOXIRI		6	
Gem + Nab-Pac		2	