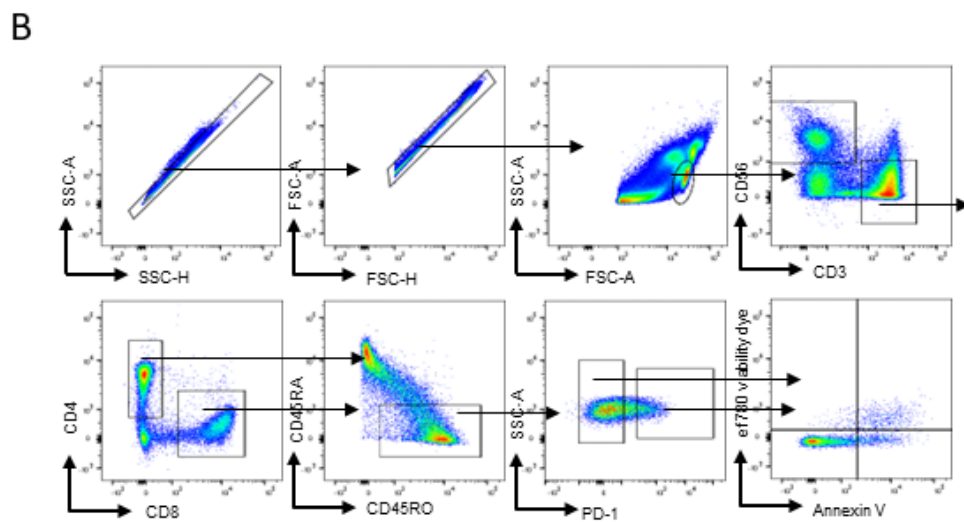
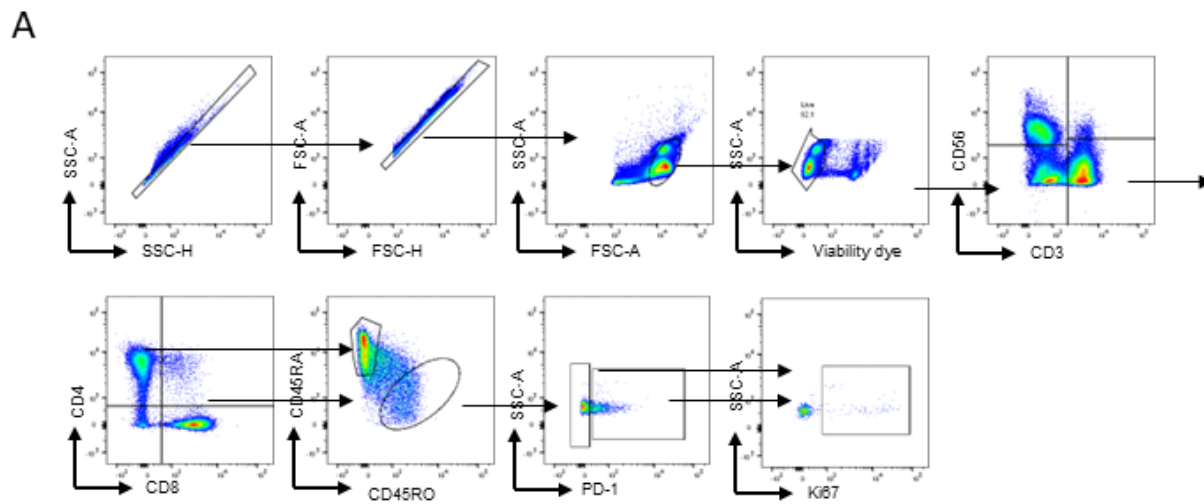
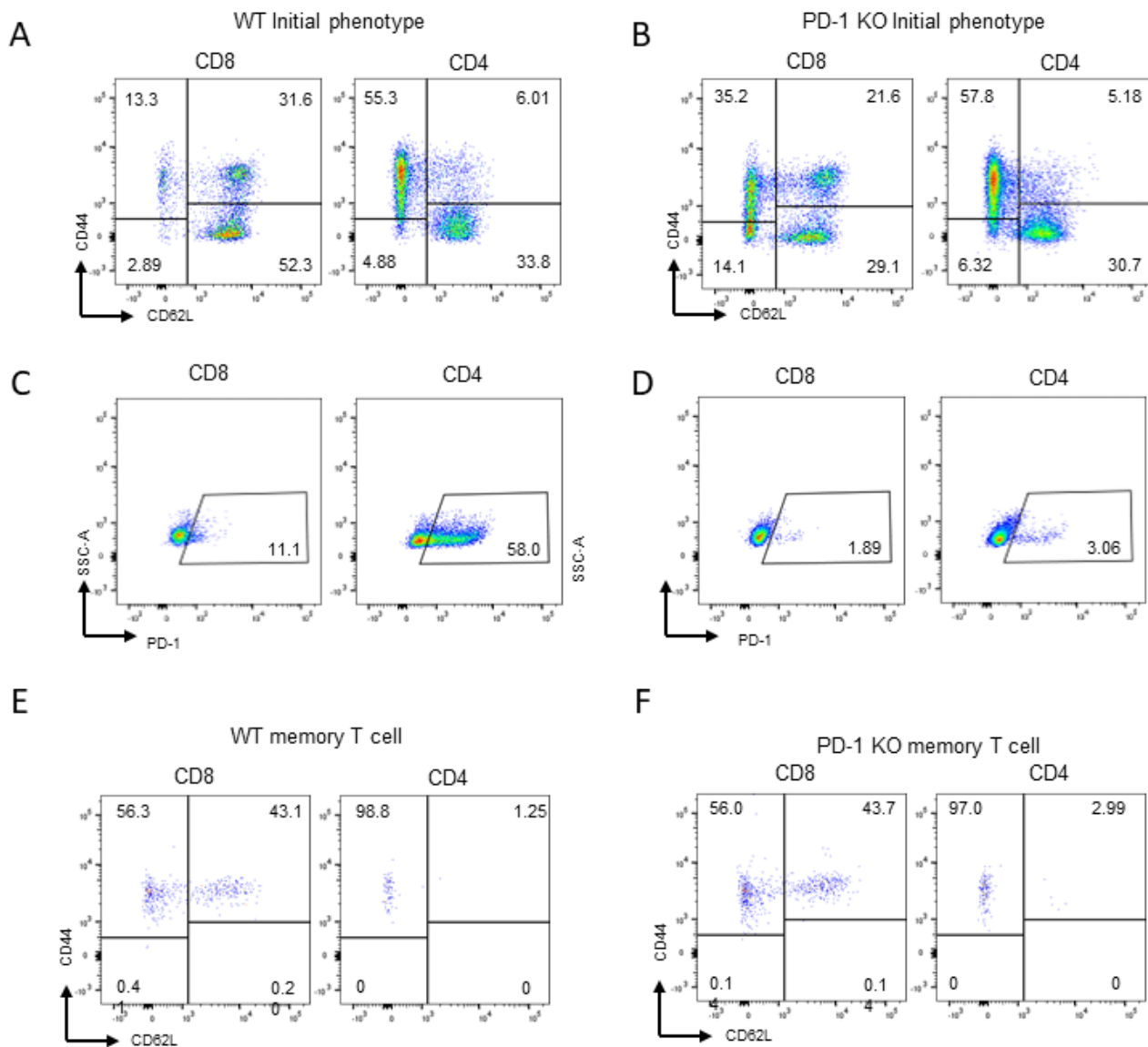


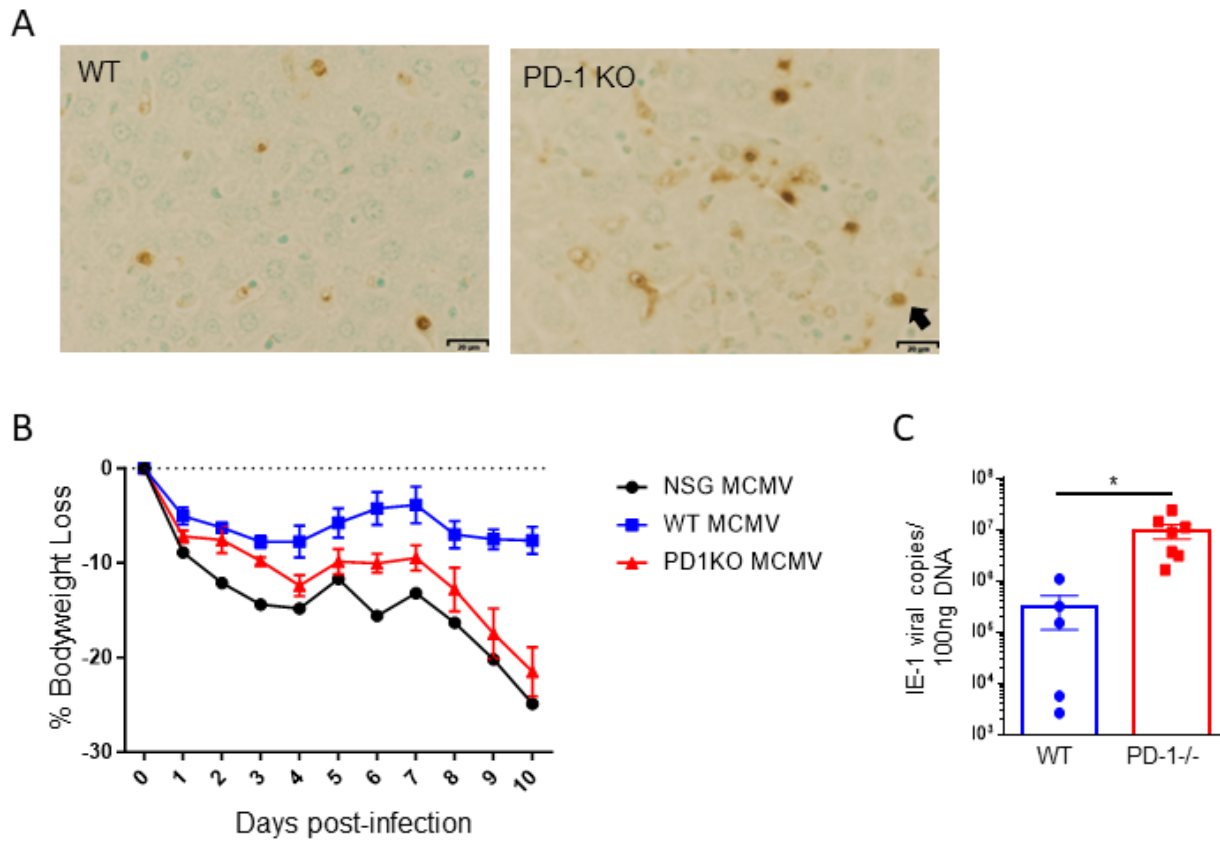
Supplemental Figure 1. A) Live cell counts following in vitro culture of IL-2 at three doses (100 IU, 1,000 IU, and 10,000 IU) at 3 and 6 days. B & C) Flow cytometry plots of Ki67 and Granzyme B expression from PD-1+ and PD-1- T cells cultured from murine splenocytes stimulated with IL-2 in vitro. All experiments depicted are representative of at least two experiments.



Supplemental Figure 3. A & B) Representative flow cytometry gating for Ki67 and Annexin V staining of hPBMCs.



Supplemental Figure 4. A & B) Representative pre-sort memory phenotype of WT and PD-1 KO T cells. C & D) Representative PD-1 staining of pre-sort WT and PD-1 KO T cells. E & F) Representative post-sort memory phenotype of WT and PD-1 KO T cells used for adoptive transfer studies.



Supplemental Figure 5. A) Representative TUNEL Immunohistochemistry staining of liver tissue from WT and PD-1 KO cell recipients. B) Percent bodyweight loss overtime of NSG without adoptive transfer, WT cell NSG recipients and PD-1 KO cell NSG recipients following infection with MCMV. C) MCMV viral copies in liver at day 11 post MCMV infection in NSG recipients of WT or PD-1 KO cells. Two-tailed unpaired Student's t-test were used to compare two groups (C). * $p < 0.05$